

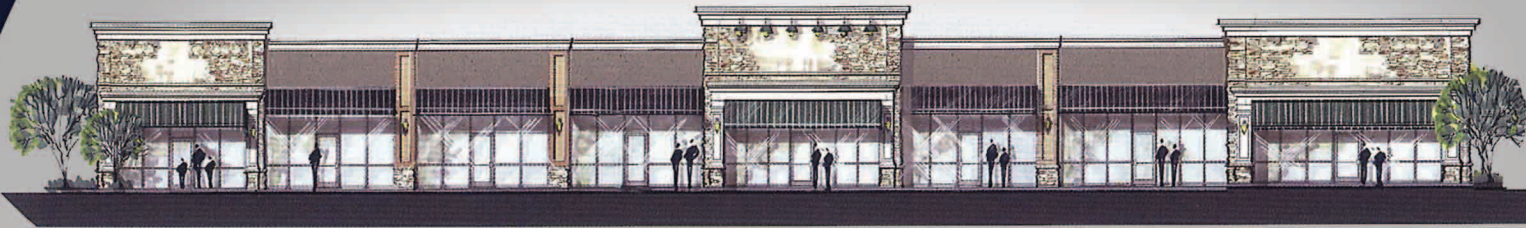
PEACHTREE PARKWAY PAVILION

Located in Suwanee, Georgia (Forsyth County), near the entrance to Laurel Springs Golf and Country Club Community on Peachtree Parkway/SR 141, this prestigious location will cater to a very upscale clientele in the 5th fastest growing county in the nation. This new retail development offers high visibility and three main access points, including one traffic signal.

SURROUNDING RETAIL INCLUDES:

Target, Home Depot, Bed Bath & Beyond, Lowe's, Publix, CVS, Bank of America, SunTrust and Kroger.

BUILDING SIZE: 11,000+/- square feet **RETAIL BAYS:** 1,200 to 4,200 square feet



2009 AVERAGE HOUSEHOLD INCOME

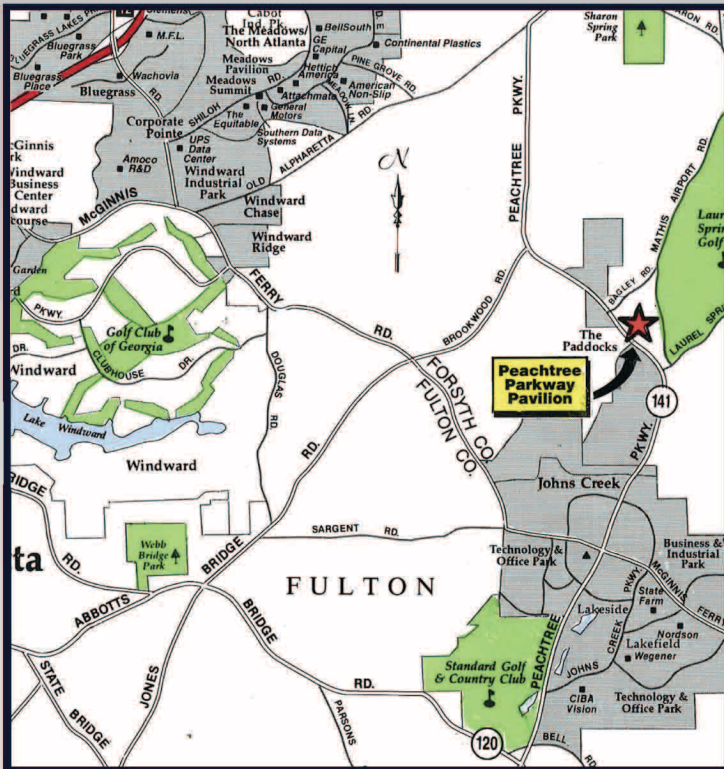
1 Mile \$140,741
 3 Miles \$136,317
 5 Miles \$124,792

2009 TOTAL POPULATION

1 Mile 5,877
 3 Miles 59,427
 5 Miles 144,545

2009 AVERAGE DAILY TRAFFIC COUNT

Peachtree Parkway (SR 141) at
 Laurel Springs Parkway: 37,978



NEWSOUTH
PROPERTIES
 ACQUIRE. DEVELOP. PERFECT.

CHUCK SECHLER .. chuck@newsouth1.com
OFFICE 770.729.0444
CELL 404.219.1000
www.newsouthrealestate.com

PEACHTREE PARKWAY PAVILION

