

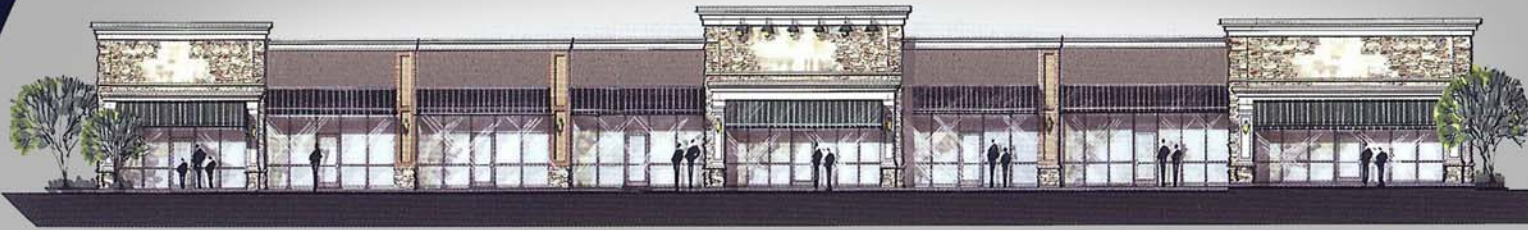
PEACHTREE PARKWAY PAVILION

Located in Suwanee, Georgia (Forsyth County), near the entrance to Laurel Springs Golf and Country Club Community on Peachtree Parkway/SR 141, this prestigious location will cater to a very upscale clientele in the 5th fastest growing county in the nation. This new retail development offers high visibility and three main access points, including one traffic signal.

SURROUNDING RETAIL INCLUDES:

Target, Home Depot, Bed Bath & Beyond, Lowe's, Publix, CVS, Bank of America, SunTrust and Kroger.

BUILDING SIZE: 11,000+/- square feet **RETAIL BAYS:** 1,200 to 4,200 square feet



2009 AVERAGE HOUSEHOLD INCOME

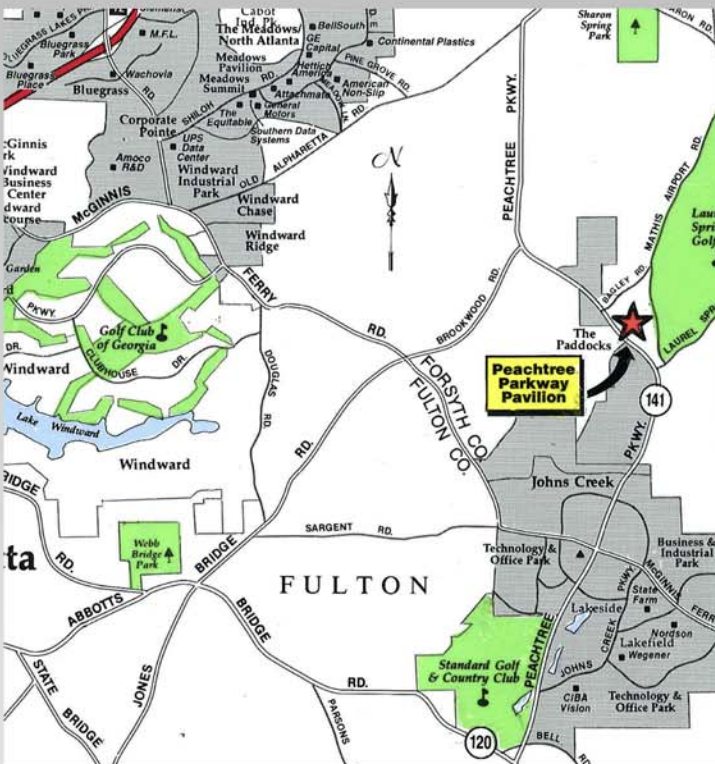
1 Mile \$135,103
 3 Miles \$133,541
 5 Miles \$123,349

2009 TOTAL POPULATION

1 Mile 5,574
 3 Miles 55,395
 5 Miles 135,760

2009 AVERAGE DAILY TRAFFIC COUNT

Peachtree Parkway (SR 141) at
 Laurel Springs Parkway: 33,930



NEWSOUTH PROPERTIES
 ACQUIRE. DEVELOP. PERFECT.

CHUCK SECLER . . chuck@newsouth1.com
OFFICE 770.729.0444
www.newsouthrealestate.com

PEACHTREE PARKWAY PAVILION



No warranty or representation, expressed or implied, is made by the Owner, New South Properties, or any of its respective affiliates, as to the accuracy or completeness of the information contained herein. All information is subject to change without notice.